

Alto 2

Ever Grande City

Go Ichinose/ Junichi Masuda
From Pokemon Ruby and Sapphire
Arr. Brandon Moore

Swing ♩ = 138

Musical score for Alto 2 of 'Ever Grande City'. The score is written in treble clef with a key signature of one sharp (F#) and a tempo of 138 beats per minute in a swing style. The score consists of 48 measures, organized into 10 staves. Measure numbers 1 through 48 are indicated below the notes. The score includes various musical notations such as eighth notes, quarter notes, half notes, and full notes, as well as rests, ties, and dynamic markings like 'mf' and 'sim.'. There are also performance instructions like '3' (triplets) and '8' (octaves). The score is divided into sections A and B, which are marked with boxes containing the letters 'A' and 'B' respectively. Section A starts at measure 12 and ends at measure 24. Section B starts at measure 29 and ends at measure 48.

3
mf 1 2 3 sim. 4

5 6 7 8

9 10 11 12 A

13 14 15 16 17-24 8

25 26 mf 3 3 27 28

29 30 31 32 B

33-35 36 37

38 39 40 41 42-44 3

45 3 46 3 47 48

Ever Grande City - Alto 2 - pg 2

C

49-56 57 58 59 60

61 62 63 64

65 66 67 68

69 70 71 72

73 74 75 76

Section C contains measures 49 through 80. It begins with a whole rest for measures 49-56, followed by a half note G4 in measure 57. Measures 58-60 feature a triplet of eighth notes (F#4, G4, A4) and a half note B4. Measures 61-64 include a half note G4, a half note F#4, a quarter note E4, and a quarter note D4. Measures 65-68 consist of eighth notes (D4, C4, B3, A3, G3, F#3, E3, D3). Measures 69-72 are eighth notes (C3, B2, A2, G2, F#2, E2, D2, C2). Measures 73-76 are eighth notes (B1, A1, G1, F#1, E1, D1, C1, B0). Measures 77-80 are eighth notes (A0, G0, F#0, E0, D0, C0, B0, A0).

D

81-88 89 90 91 92 93 94 95 96

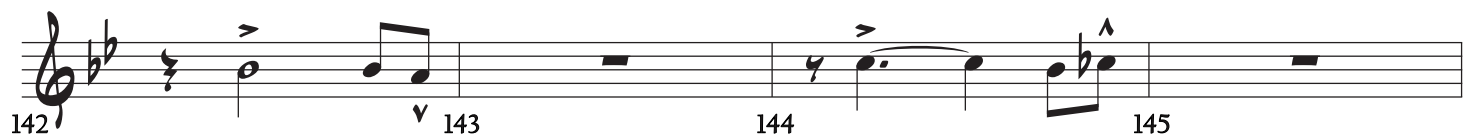
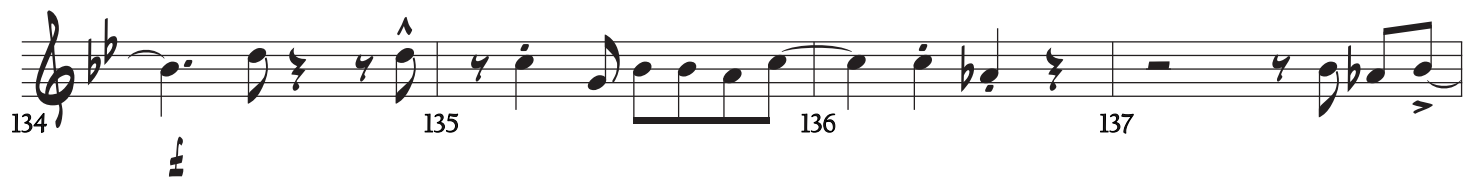
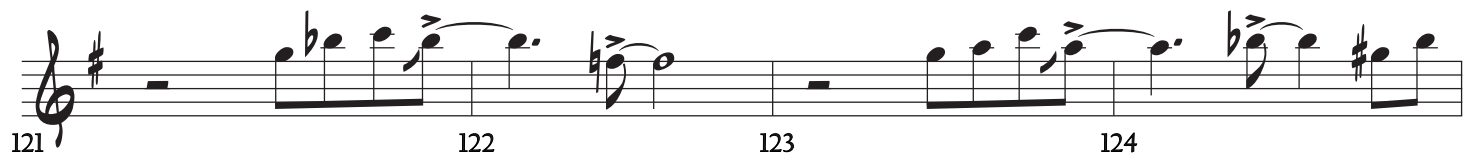
Section D contains measures 81 through 96. It begins with a whole rest for measures 81-88, followed by a half note G4 in measure 89. Measures 90-91 feature a triplet of eighth notes (F#4, G4, A4) and a half note B4. Measures 92-93 consist of eighth notes (D4, C4, B3, A3, G3, F#3, E3, D3). Measures 94-95 are eighth notes (C3, B2, A2, G2, F#2, E2, D2, C2). Measures 96-97 are eighth notes (B1, A1, G1, F#1, E1, D1, C1, B0).

E

97-104 105-107 108 109 110 111 112

Section E contains measures 97 through 112. It begins with a whole rest for measures 97-104, followed by a half note G4 in measure 105. Measures 106-107 feature a triplet of eighth notes (F#4, G4, A4) and a half note B4. Measures 108-109 consist of eighth notes (D4, C4, B3, A3, G3, F#3, E3, D3). Measures 110-111 are eighth notes (C3, B2, A2, G2, F#2, E2, D2, C2). Measures 112-113 are eighth notes (B1, A1, G1, F#1, E1, D1, C1, B0).

Ever Grande City - Alto 2 - pg 3



Ever Grande City - Alto 2 - pg 4

154 155 156 157

158 159 160 161

162 163 164 165

166 167-168 169 3 3 3

170 171 172 173

174 175 176 177

178 179 180 181 3 3 3

182 183 184 185 3 3 3 v

186 187 188